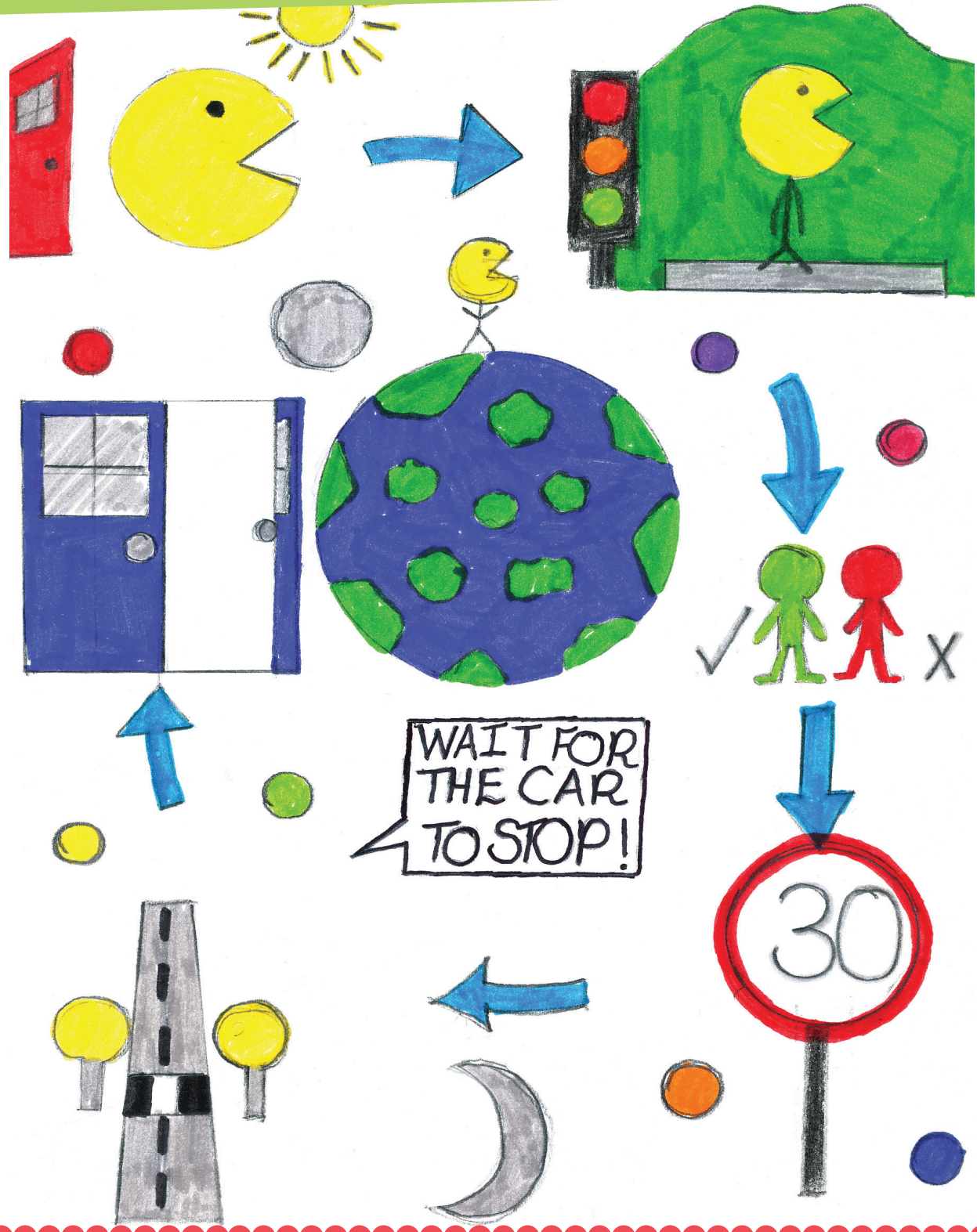


The Crescent Primary School Travel Plan





What is a School Travel Plan?



A travel plan looks at how we all travel to and from school. It looks at the problems we encounter and possible solutions that will:

- Improve safety on the journey to school, encourage walking, scooting and cycling to school and reduce the number of car journeys made; and
- Encourage curriculum activities to raise awareness of safety, environmental and health issues.

Planning how we travel to school also benefits our health as individuals and provides wider benefits for our local community and the environment.

Why does The Crescent Primary School need a travel plan?

The Crescent Primary School was until 2013 a two form entry school, but now there will be three reception classes joining the school each year until 2020 which means it will eventually become a very large primary school with a total of around 610 pupils.

Our school is situated in a side street off a very busy main road to the M3 motorway, and despite the fact that most of our pupils choose to walk to school, they have to contend with a number of very busy roads, narrow pavements, heavy goods vehicles and a lack of parking facilities around the school. This means that parents, pupils, staff, local residents and businesses are all affected.

The plan has been produced in response to the expansion of the school, safety concerns, the desire to reduce the impact and number of vehicle trips and congestion around the school, inconsiderate parking and manoeuvring, and as a way to promote practical alternatives that might alleviate these problems.

Aims of our School Travel Plan

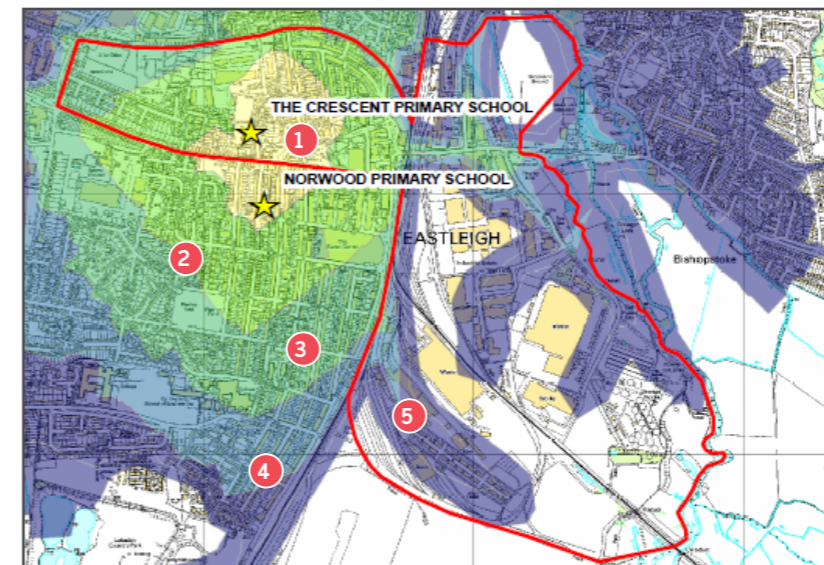
- Improve safety for children and parents on their journey to and from school;
- Where possible encourage a healthier lifestyle;
- Reduce traffic congestion and parking problems outside school and on local residential roads; and
- Educate children and parents about road safety, the environment and healthy lifestyles.

How we developed our travel plan?

Our travel plan is the result of an extensive consultation exercise. Representatives of the school, the community, Eastleigh Borough Council and Hampshire County Council were part of a working party to review the problems and hazards children and their parents face on their way to school.

Surveys were filled in by school staff, children and their parents, and local residents were also able to express their views both by way of a questionnaire and at the drop in evening consultations held during the design process for the expansion.

Traffic and speed surveys were also commissioned via a professional transport consultancy. The information gathered from all these sources helped us devise our travel plan and establish and prioritise our action plan.



- 1 5 minutes walking
- 2 10 minutes walking
- 3 15 minutes walking
- 4 20 minutes walking
- 5 25 minutes walking

Map of the school catchment area with walking/cycling zones (cycling takes half the time of walking)

The problems encountered

- Roads around school are very busy
- Lorries on Toynbee Road
- Crossing Leigh Road, Brookwood Road, Derby Road, Southampton Road
- Lack of parking
- Inconsiderate driving and parking by a number of parents including parents parking in residential allocated spaces not for public use, parking across or turning in residential drive ways near the school, opening doors onto narrow pavements
- Narrow pavements especially opposite the school
- Dog fouling in the alleyways around school
- Lack of lighting in the alleyways around school





What we plan to do

To encourage walking:

Work with local police to encourage responsible driver behaviour towards pedestrians outside school.

Liase with Eastleigh Borough Council and Hampshire County Council to investigate:

Improving the footpaths around the school

Reducing the amount of dog mess by working with the Animal Welfare Officer

Engineering advice to check whether lighting on the footpath between Toynbee Close and Archers Road is feasible and appropriate

Develop Park and Stride from the Co-op and Good Companions Pub

The possibility of extending the pavement opposite the school in Toynbee Road if or when the Police Station is redeveloped.



To encourage scooting and cycling:

Provide more scooter and cycle storage as part of the expansion at both back and front entrances

Provide basic cycle training on the playground for pupils aged 8 and up, and Bikeability training for pupils age 10 and up

Provide scooter training for children from YR to Y4

Promote use of safety clothing and cycle helmets

To raise awareness the school will:

Ensure 100% of pupils to be taught road safety each year.

Sign up to Junior Road Safety Officer training (JRSO) to promote road safety messages.

Introduce the Parents Parking promise to ensure safe, considerate and sensible parking when using the car

Review curriculum to identify gaps and opportunities to increase road safety education.

Our Targets and objectives are:

To improve the number of pupils choosing to walk or scoot to school to 82% by Dec 2017

To increase the number of pupils choosing to scoot to school to 15% by 2015

Increase pupils choosing to cycle to school from 1% to 2% by March 2015

To ensure parents and children feel safe walking to school

For children who choose to scoot or cycle to school to have adequate places to park their scooters and bikes

How will we monitor progress?

Annually by "hands up" survey and by reviewing and updating the travel plan every two years including a full travel survey. The findings will be communicated on the school website, in the prospectus, in the newsletter and to new prospective parents.